



Toolmaking, Stamping, Machining



We are located in Central Europe,
the centre of automotive industry.



Company name

Headquarters

Plant

Foundation year

tel.

fax

e-mail

http

Managing director
Commercial manager

ROSTRA s.r.o.

Příkop 2a, 60200 Brno

Říčanská 989, 76312 Vizovice

2000

+420 577 004 511

+420 577 452 566

rostra@rostra.cz

www.rostra.cz

Ing. Petr Mikulčík, tel. +420 577 004 529

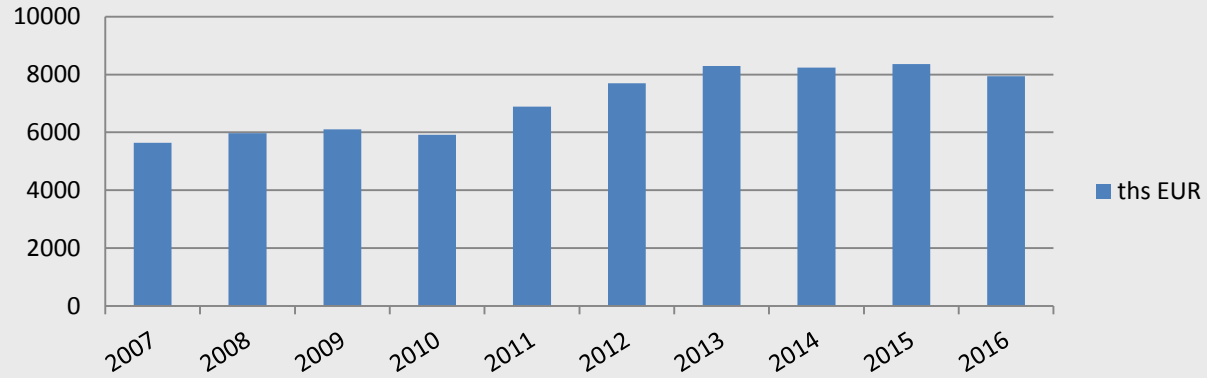
Ing. Josef Šňupík, tel. +420 577 004 510

- 2000 - setting up one's own business
- 2001 - certification of the QMS in accordance with the ISO 9001
- 2002 - new facility for tool try-outs: press ERFURT 315 t
- 2003 - certification of the QMS in accordance with the ISO/TS 16949
- 2005 - new tool shop – assembly hall
- 2006 - new press shop I. stage
- 2007 - improved of the CNC milling capability of the wire cutting capability
- 2009 - advanced management information CRM system Syte Line.
- 2010-11 - Operational Program Human Resources and Employment (EU)
- 2012 - new facility for tool try-outs: press VORONEZ 800 t
- 2013 - new pressshop II
- 2014 - new facility for tool try-outs and stamping: presses Erfurt 315 t, Schuler 315 t
- 2015 - facility for tool try-outs and stamping: press Arrasate 400 t
 - measuring equipment: 3D Dea Global
 - upgrade CRM system Syte Line 9
- 2016 - new warehouse 1 800 m²

Nominal capital
Turnover
Production
export
domestic

160 ths EUR
 7 941 ths EUR
 7 441 ths EUR
 7 %
 93 %

Turnover



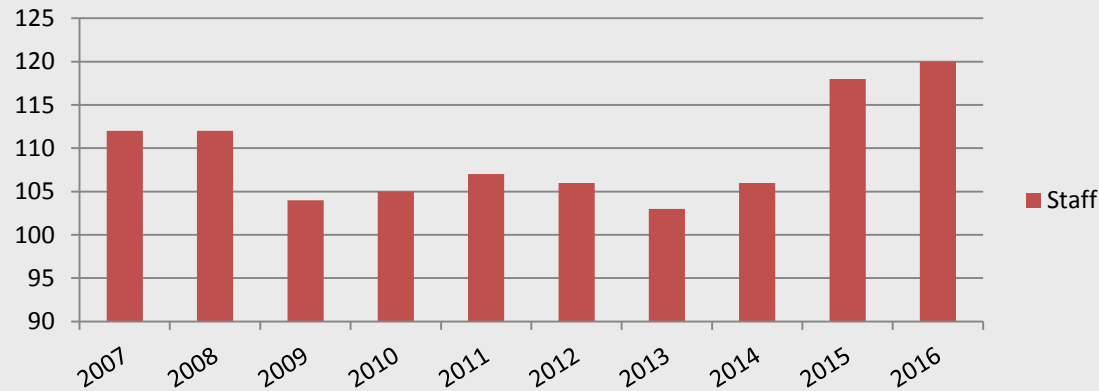
Employees 122 in 2016
Workers
 (total 63)

Clerical staff
 (total 59)

Tool shop: 26
 Press shop: 34
 Turning shop: 3

 Management: 5
 Design dept.: 6
 Engineering dept.: 4
 Logistic: 3
 Purchasing: 8
 Foremen : 10
 Quality inspectors: 8
 Technical admin.: 3
 Maitenance: 10
 Administration: 2

Staff



1.1. Tools

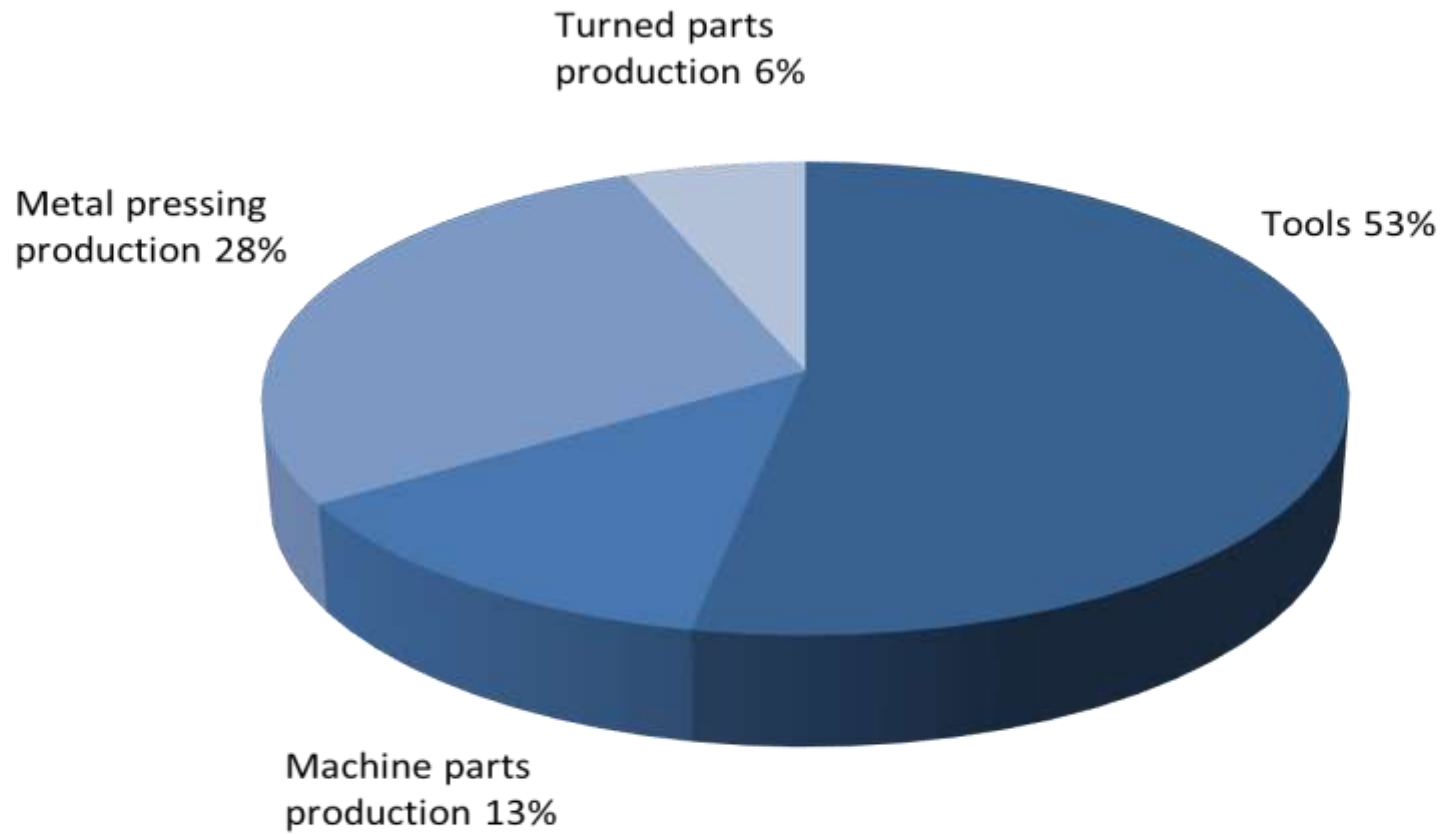
- ▶ progressive
- ▶ tandem
- ▶ transfer

1.2. Precision machine parts production

- ▶ spare parts for tools and dies
- ▶ piece and small-series production of parts for production and assembly lines, parts for single-purpose machines.

2. Stamping parts

- ▶ parts for the automotive industry
- ▶ parts for the telecommunications and electrical industry



Design:

- 3D, 2D documentation
- Simulation outsourced



SW:

4x Solid Works 2016

3x Siemens NX 11

1x VISI SERIES 2017

8x AutoCAD 2006



CAM:

- 3D programming

SW:

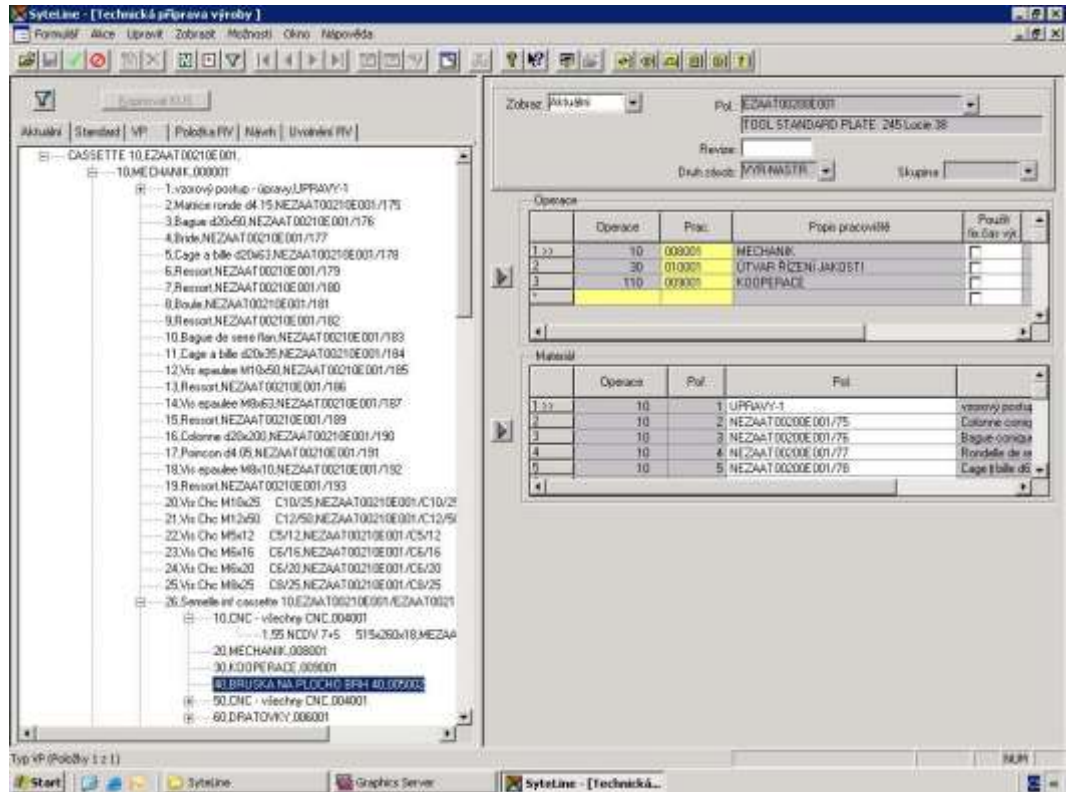
3x Siemens NX10

1x Vericut V8.0

- Technological proces

SW

3x SyteLine 9



Production technology

- CNC milling
- Turning
- Grinding
- Electroerosion
- Treatments outsourced
- Assembly
- Try-outs



- Stamping



- Nuts welding



Quality department:

- 3D measuring
- 2D measuring





Press shop

1 300 m²

Lifting capacity : 30t



Tool shop

2 656 m²

Lifting capacity: 30t



Presses



Erfurt 315 t



Schuler 315 t



GTX 300 t

Presses



Kalinin 200 t



Arrasate 400 t

Presses

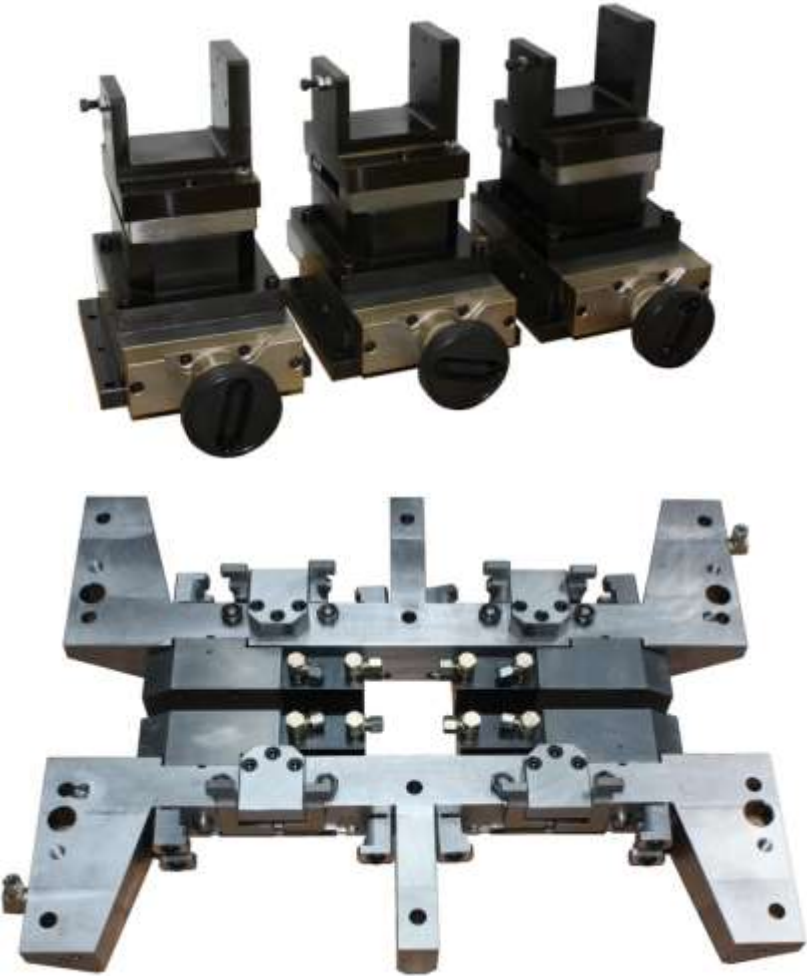


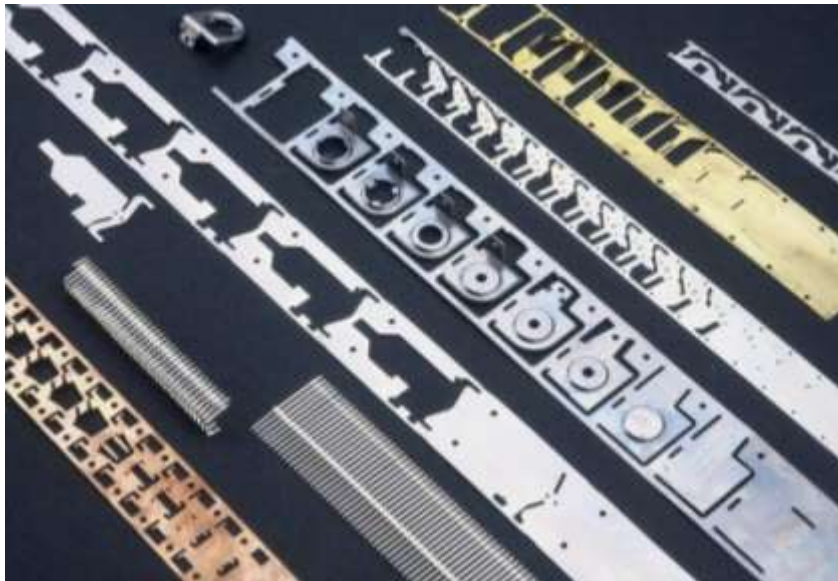
Pels 630 t



Voroněž 800 t

Machine parts, subassembly





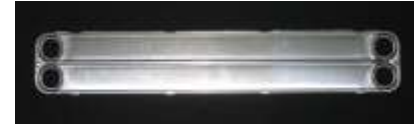
Standard Plate



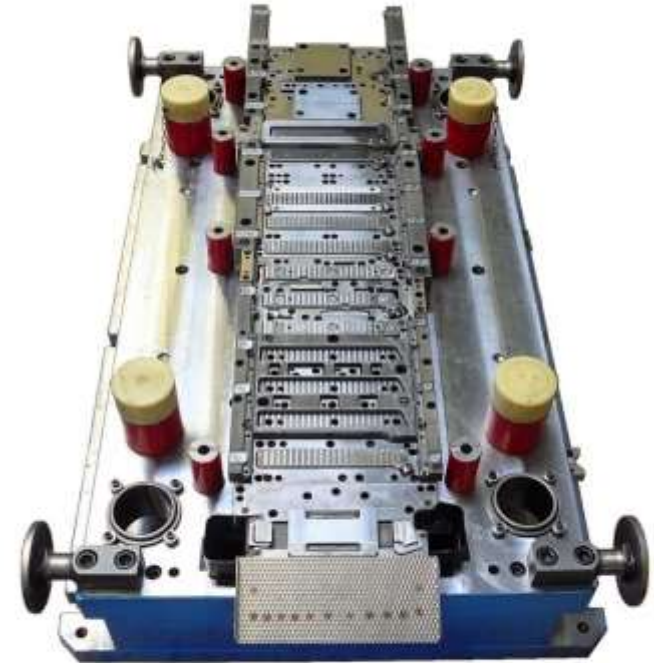
TAHC



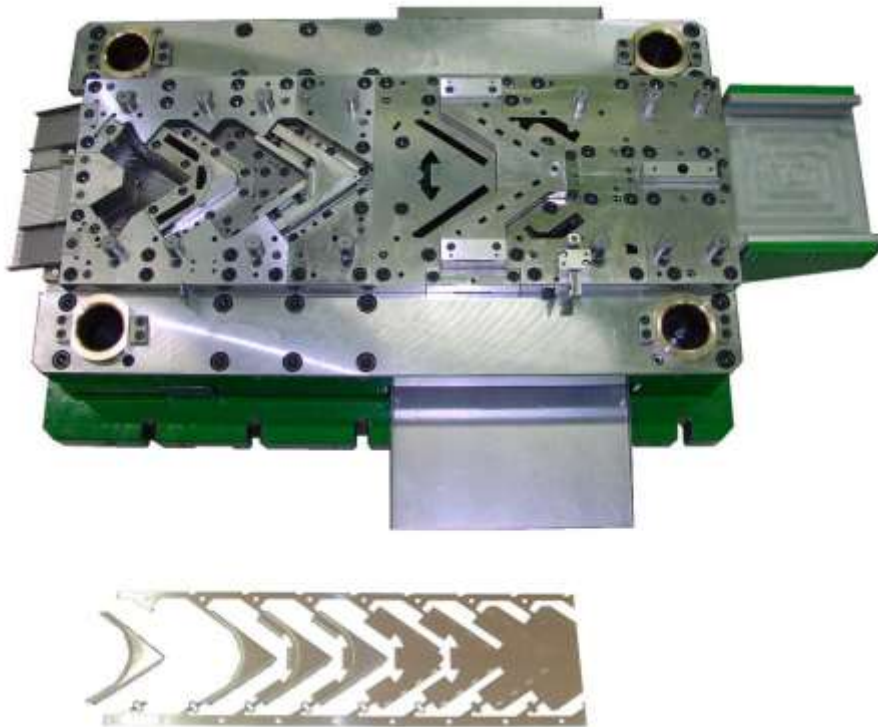
Lucie



TAHC Header 32 tubes End



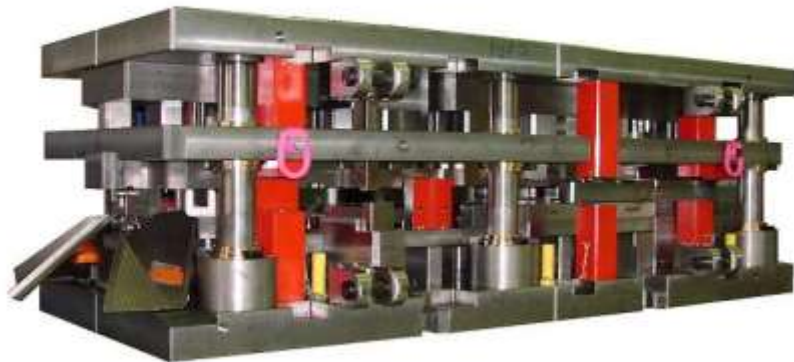
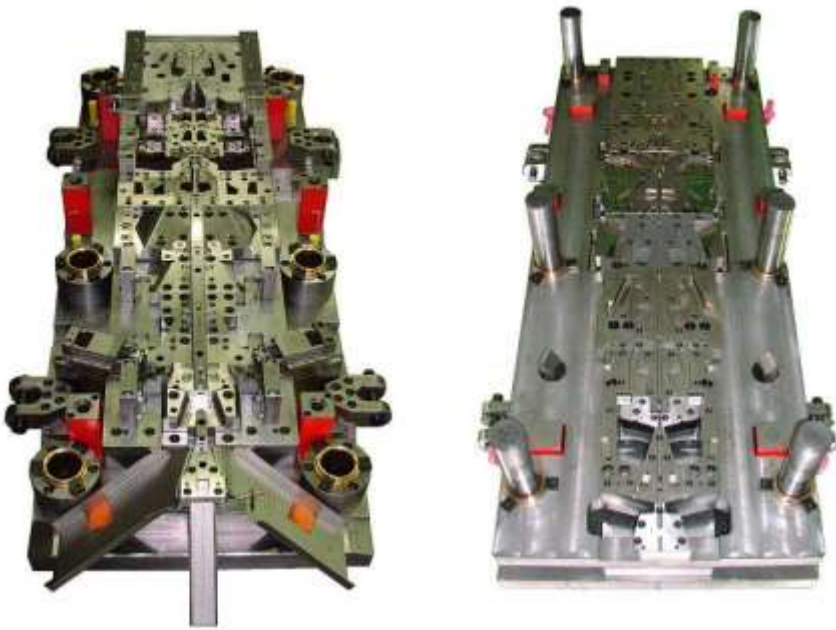
TAHC Header 23 Tubes Side 1



Progressive die Jaguar: 1300x880x600 mm, 2500 kg



Progressive die Porsche: 690x720x570 mm, 1100 kg



Progressive die BMW: 2040x836x680 mm, 4800 kg



Progressive die BMW: 1560x1000x536 mm, 3000 kg

Project: BMW-PL6



Progressive die 1210x520x550 mm, 1590 kg



Progressive die 1210x520x550 mm, 1590 kg



Progressive die 1560x1000x536 mm, 3000 kg



Progressive die 1600x1100x640 mm, 3000 kg

Blank dies



Blank die Škoda A-Entry B-Säule 2575x1180x1010mm, 13 t



Blank die Škoda SK37X TA 2180x2210x1200mm, 14,9 t



Blank die Škoda YETI SK326 Träger Stossf 2320x2068x1130 mm, 16,6 t



Blank die VW MQB QTR Verst Fersenteil 2510x1340x1150mm, 9 t

Tandem dies



Tandem die Škoda SK481 Superb



Tandem die Škoda SK481 Superb 1732x1072x920 mm, 4,4 t

Transfer dies



Transfer die Škoda SK482_Superb Combi 3235x2050x1150 mm, 15,4 t

Project: Audi C6/V7



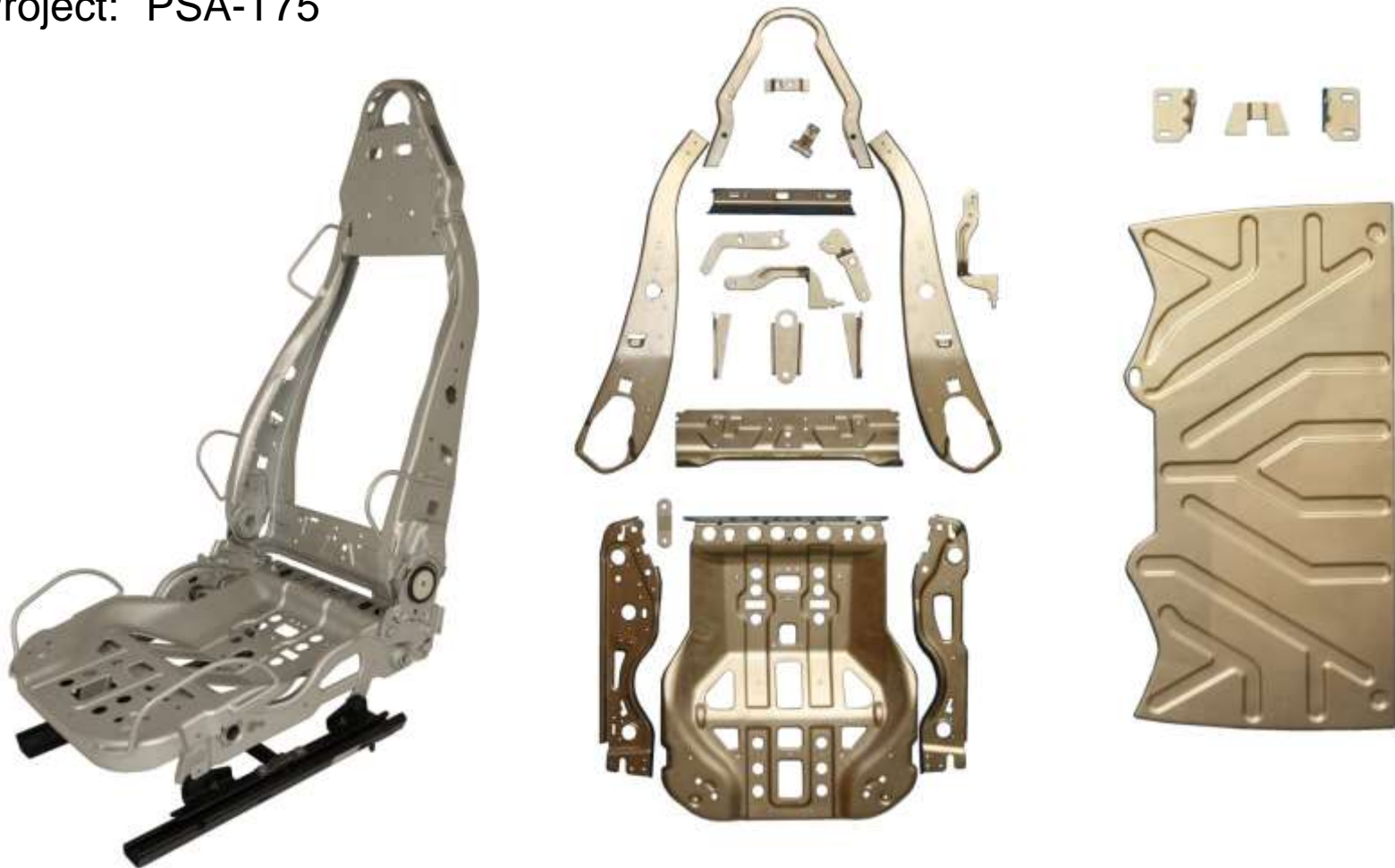
Project: BMW-PL6



Project: SLW



Project: PSA-T75



Project: REN-X82



Project: NIS-H60A



Project: Audi-Q1

HALTER DEFROST LL

DECKEL

HALTER DEFROST RL

SCHLISSBLECH RL



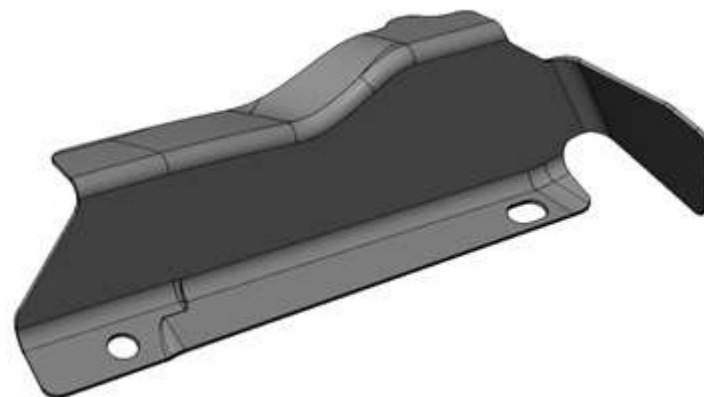
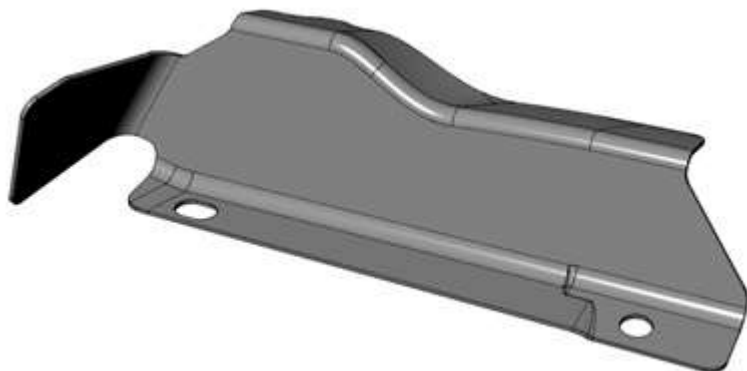
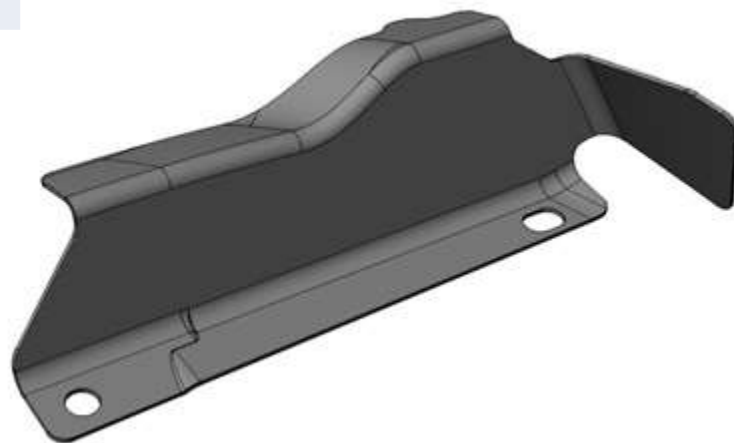
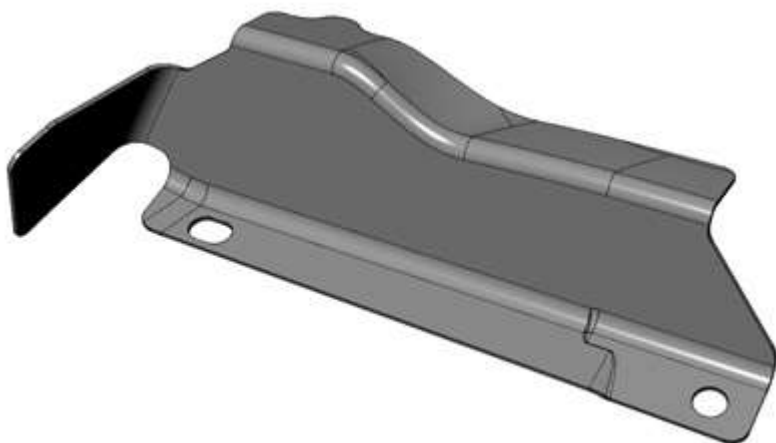
Project: Audi-Q7

Schottteil Säule A oben RDW LH

Schottteil Säule A oben RDW RH

Schottteil Säule A oben NAR LH

Schottteil Säule A oben NAR RH



Project: Audi-B9 - cabrio

Knotenblech Cabriolet Li

Knotenblech Cabriolet Re

Pollerverstaerkung Cabrio

Anbi Diag Stre VO Li





Stock for raw material: 1 600 tons



Stock for final parts: 180 tons

EDI scheduling





WIRE CUTTING M/C

ELEKTROEROSION DRAHTSCHNEIDEMASCHINEN

		Construct. year/Baujahr		x	y	z
1	FANUC α -C600iA	2017		1050	820	310
1	FANUC α -C600iA	2016		1050	820	310
1	FANUC α -1iD CE	2008		600	400	310
1	HITACHI 254Y/FF3	2004		250	400	210
1	HITACHI 355Y	2002		500	350	300
1	HITACHI 355R	1999		450	300	300

ELECTRICAL DISCHARGE M/C

ELEKTROEROSION SENKANLAGEN

		Construct. year/Baujahr		x	y	z
1	DECKEL	1988	DE 25 C MULTIFORM 2	500	350	300

MACHINING CENTRE

BEARBEITUNGSZENTREN

		Construct. year/Baujahr		x	y	z
1	HERMLE	2015	HERMLE C 42 U	500	320	245
1	TAJMAC - ZPS	2008	MCFV 1060 STANDARD	1016	610	760
1	TAJMAC - ZPS	2007	MCFV 1060 STANDARD	1016	610	760
1	DECKEL MAHO	2003	DMU 60T TNC 530	630	560	560
1	DECKEL MAHO	2002	DMC 125P hi-dynTNC 426	1220	880	800
1	DECKEL MAHO	2000	DMC 100V hi-dynTNC 426	1000	800	500

MILLING MACHINES M/C				FRÄSMASCHINEN		
Construct. year/Baujahr				x	y	z
1	DECKEL	1989	FP 3 NC DIALOG 11 E	400	400	400
LATHES				DREHMASCHINEN		
Construct. year/Baujahr				ø	L	
1	TOS	1989	SM 16 A	160/100	400	
1	TOS	1989	SUI 32	320/180	750	
2	ZPS	1987, 1985 (CR/GR)	SAY 8/40 automatic	40	160	
GRINDING M/C				SCHLEIFMASCHINEN		
Construct. year/Baujahr				ø	L	
1	TOS	1998	BU 16 universal	160	320	
1	TOS	1986	BU 28 universal	160	630	
				x	y	
1	ZIERCH GmbH	2015	ZIERCH ZT 612 horizontal	1200	700	
1	AQUASTYL SLOVAKIA	2013	BRH AQ500 horizontal	1000	500	
1	ZVL	2017 (repase)	BRH 20.05 horizontal	630	230	
1	ZVL	2017 (repase)	BRH 20.02 horizontal	630	230	

PRESSES

PRESSEN

Construct. year/Baujahr				Max. Force (t)	Table Dimensions x y	
1	VORONĚŽ TMP 800	2013 (repase)	eccentric crank press	800	4200	2100
1	ERFURT PELS 630	2007 (repase)	eccentric crank press	630	3150	1800
1	ARRASATE	2016 (repase)	eccentric crank press	400	2700	1640
1	SCHULER 315	2015 (repase)	eccentric crank press	315	1800	1050
1	ERFURT PKZZ 315	2014 (repase)	eccentric two-point with roller leveller, machin	315	2400	1400
2	GTX-300	2010	eccentric crank press	300	2400	3200
1	KALININ 200	2007 (repase)	eccentric double-point crank press with roller	200	2000	1250
1	ŠMERAL LEN 63	1987	with roller leveller and machine feed	63	800	630
2	ŠMERAL LEN 40	1989, 1979	eccentric crank press	40	660	530
1	KAISER 50	1988	with machine feed	50	810	550
1	KAISER PV 32	1979	with machine feed	32	440	220
1	KAISER PV 16	1979	with machine feed	16	160	320

OTHER EQUIPMENT

WEITERE EINRICHTUNGEN

Construct. year/Baujahr		activity/Betrieb	thickness	L	
1	MIDDLE FREQUENCY WELDING PRESS	2008	DW-WPM-130 kVA MF for nut welding	lift 125 mm	table 235 x 235
1	THREAD CUTTING MACHINE	2005	cutting of inside threads \varnothing 3 - 20 mm		
1	THREAD CUTTING MACHINE	2007	cutting of inside threads \varnothing 3 - 20 mm		
1	THREAD CUTTING MACHINE GEM 20C Suhner Polly drill	2004	multiple cutting of inside threads for sheet metal parts	Steel: 4x \varnothing 10mm Al: 4x \varnothing 13 mm	
1	SHEET METAL BENDING MACHINE	1989	mechanical	3	2 000
1	PLATE SHEARS	1990	mechanical	4	2 000
1	TRUMPF GmbH	2015	TruTool N 500 - hand cutting	steel material max. 5 mm	

MEASURING EQUIPMENT				MESSEINRICHTUNGEN		
		Construct. year/Baujahr		x	y	z
1	DEA GLOBAL	2015	3D CNC digital measuring machine	900	2000	800
1	DEA MISTRAL	1996 / 2015 (repase)	3D CNC digital measuring machine	1000	1500	900
1	ROMER Absolute Arm 7525SI	2015	LASER		2500	
3	TESA MICRO-HITE 600	2001, 2004, 2011	digital height gauge			
1	VISION SWIFT	2012	microscope	150	100	
1	MVD	1978	microscope			
1	DIA VITE DH-5	1995	roughnessmeter			
1	ŠKODAPB 1	1984	hardness tester			
DESIGN DEPARTMENT CAD				KONSTRUKTIONSABTEILUNG		
3	Siemens NX11					
4	Solid Works 2016					
1	VISI SERIES 2017					
8	AutoCAD 2006					
PROGRAMMING DEPARTMENT CAM				PROGRAMMIERABTEILUNG		
3	Siemens NX 10					
1	Vericut V8.0					

BUREAU VERITAS
Certification



Certificate

Awarded to

ROSTRA s.r.o.

Registered address: Příkop 2a, Zábřehovice, 602 00 Brno
Site: Růžanská 989, 783 12 Vážovice
Czech Republic

Bureau Veritas certifies that the Management System of the above organisation
has been audited and found to be in accordance with the requirements
of the management system standard detailed below:

Standard

ČSN EN ISO 9001:2016

Scope of supply

(The scope of supply is valid only for site)

**DESIGN AND PRODUCTION OF TOOLS,
FIXTURES AND MOULDS,
PRODUCTION OF STAMPING PARTS, MACHINED PARTS,
THEIR ASSEMBLY AND WELDING.**

Original Approval Date: 27th JULY 2007

Renewal/extension Date: 23rd DECEMBER 2017
Renewal/extension Date: 26th DECEMBER 2020

Subject to the continued satisfactory operation of the organisation's Management System, this certificate is valid
until 26th DECEMBER 2020

To check the certificate validity please call: +420 219 088 217

Further information regarding the scope of this certificate and the applicability of the management system requirements may be
obtained by contacting the representative.

Veronika Čížková Date: 27th DECEMBER 2017

Certificate Number: C2009473-1



S 3100